

# Holter Report



Generated at 2024-07-10 12:08:11 IST

## Patient

**ID** 28081960  
**Name** Cortrium Test  
**Date of birth** 1960-08-28  
**Gender** Male  
**Pacemaker** N/A

## Clinic

**Approved by** Cortrium  
**Date** 2024-07-10  
**Signature**

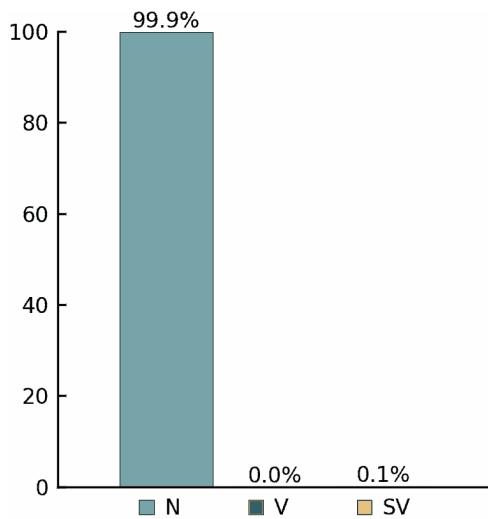
## Examination overview

**Start** 2024-07-03, 11:45:20

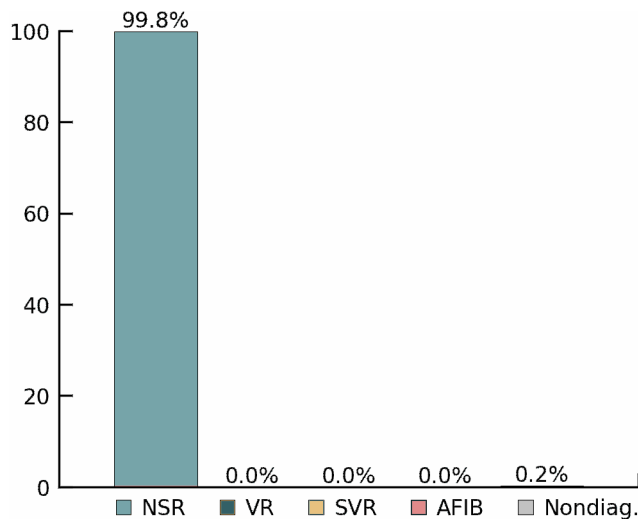
**End** 2024-07-04, 11:29:19

**Duration** 23 h 43 min

## Beats



## Rhythms



Heart rate		Ventricular		Supraventricular	
Total beats	105333	Total V beats	49	Total S beats	105
Average HR	78 bpm	Couplets	0	Couplets	0
Slowest HR	54 bpm	Runs	0	Runs	0
Fastest HR	121 bpm	Tachycardias	0	Tachycardias	0
Sinus tachycardias	23	Bigeminies	0	Bigeminies	0
Sinus bradycardias	0	Trigeminies	0	Trigeminies	0
Pauses	6	Idioventricular	0	AFIB/AFL	0%

## Summary

The duration of the recording is 23 h 43 min. 100% of the signal was of sufficient quality for analysis.

The average heart rate was 78 bpm. The fastest heart rate was 121 bpm at 09:54 (Day 2).

The slowest heart rate was 54 bpm at 04:37 (Day 2).

Rhythm analysis detected 23 episodes of sinus tachycardia, the longest being 5 min starting at 12:13 (Day 1).

Maximum pause duration 2.09 s.

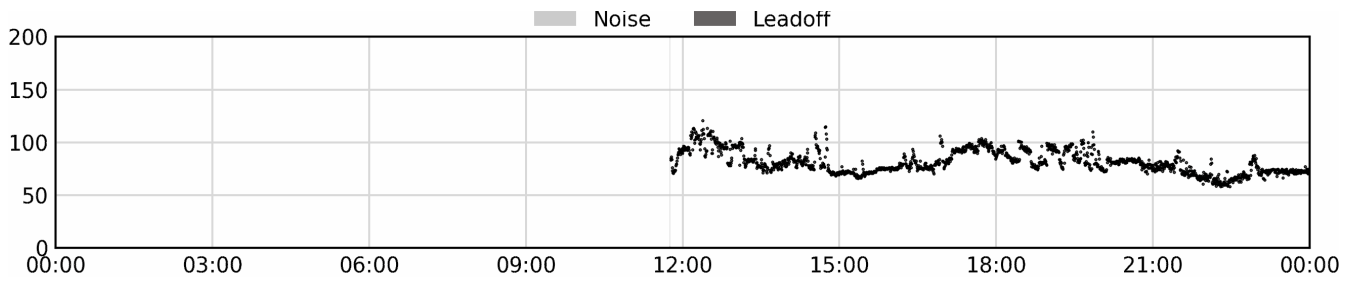
2nd degree AV-block (Type I) was detected.

1st degree AV-block was detected.

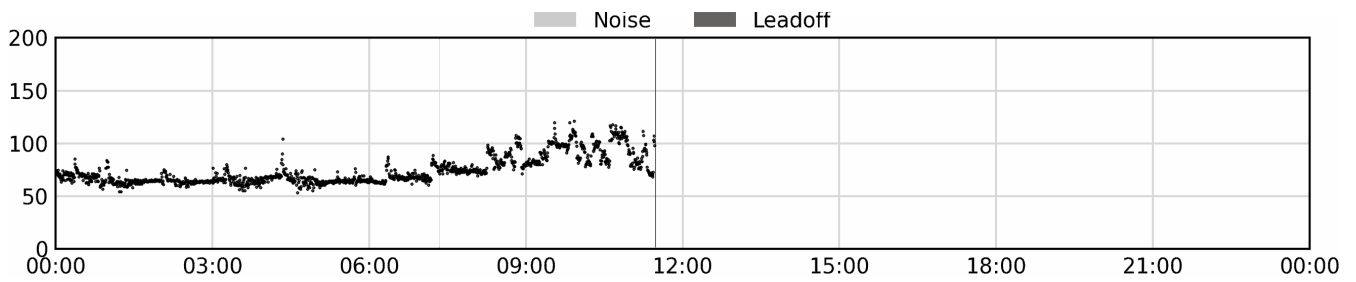
49 ventricular beats were detected.

105 supraventricular beats were detected.

### Day 1 of 2 overview



### Day 2 of 2 overview



### Day 1 of 2 heart rate table

Time		Heart Rate				Beats			
From	To	Average HR	Min HR	Max HR	Pauses	Total	V	SV	Nondiag. part
00:00	03:00	-	-	-	-	-	-	-	-
03:00	06:00	-	-	-	-	-	-	-	-
06:00	09:00	-	-	-	-	-	-	-	-
09:00	12:00	83	71	94	0	1181	0	18	3%
12:00	15:00	88	68	121	0	15630	13	31	0%
15:00	18:00	82	66	106	0	14585	4	6	0%
18:00	21:00	86	70	110	4	15080	11	9	0%
21:00	00:00	72	58	92	1	11261	12	13	0%

## Day 2 of 2 heart rate table

Time		Heart Rate				Beats			
From	To	Average HR	Min HR	Max HR	Pauses	Total	V	SV	Nondiag. part
00:00	03:00	66	55	85	1	10360	3	7	0%
03:00	06:00	66	54	104	0	10510	6	8	0%
06:00	09:00	75	61	108	0	13098	0	1	0%
09:00	12:00	93	69	121	0	13628	0	12	0%
12:00	15:00	-	-	-	-	-	-	-	-
15:00	18:00	-	-	-	-	-	-	-	-
18:00	21:00	-	-	-	-	-	-	-	-
21:00	00:00	-	-	-	-	-	-	-	-

## Day 1 of 2 rhythms

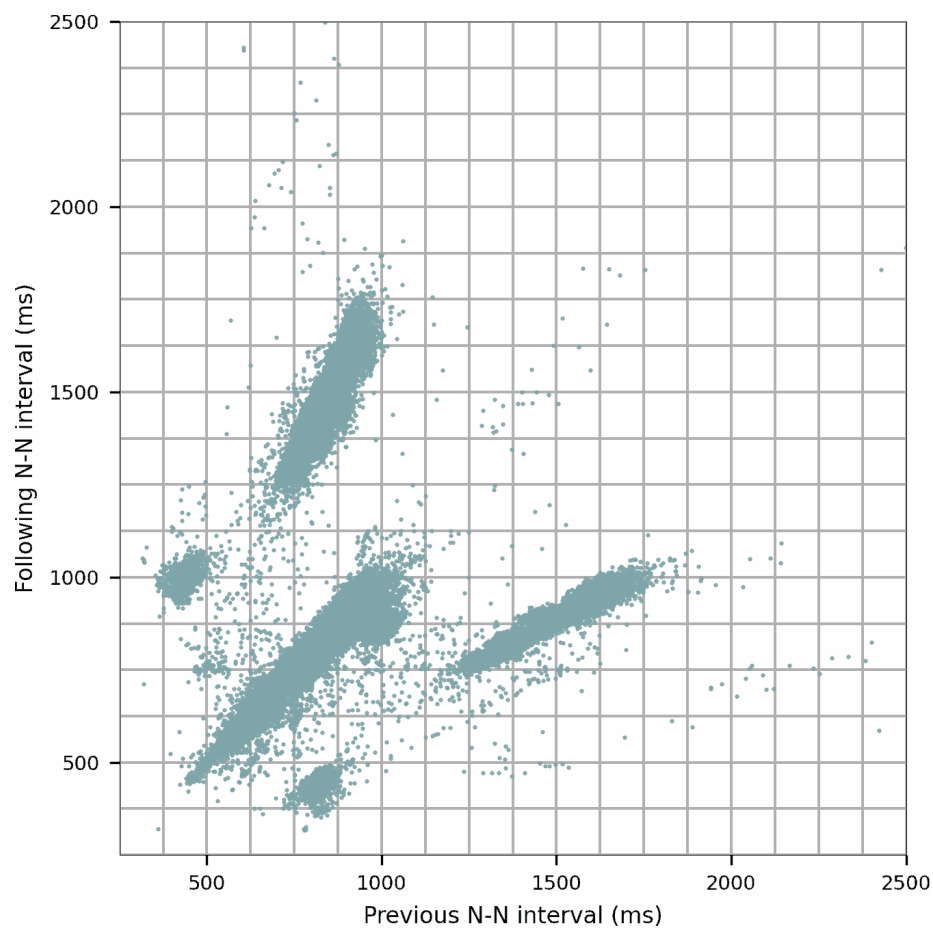
Time		Sinus		Ventricular		Supraventricular		Nondiag. part
From	To	Brady-cardia	Tachy-cardia	Idioven-tricular	Tachy-cardia	Tachy-cardia	AFIB/AFL	
00:00	03:00	-	-	-	-	-	-	-
03:00	06:00	-	-	-	-	-	-	-
06:00	09:00	-	-	-	-	-	-	-
09:00	12:00	0%	0%	0%	0%	0%	0%	3%
12:00	15:00	0%	11%	0%	0%	0%	0%	0%
15:00	18:00	0%	4%	0%	0%	0%	0%	0%
18:00	21:00	0%	0%	0%	0%	0%	0%	0%
21:00	00:00	0%	0%	0%	0%	0%	0%	0%

## Day 2 of 2 rhythms

00:00	03:00	0%	0%	0%	0%	0%	0%	0%
03:00	06:00	0%	0%	0%	0%	0%	0%	0%
06:00	09:00	0%	2%	0%	0%	0%	0%	0%
09:00	12:00	0%	10%	0%	0%	0%	0%	0%
12:00	15:00	-	-	-	-	-	-	-
15:00	18:00	-	-	-	-	-	-	-
18:00	21:00	-	-	-	-	-	-	-
21:00	00:00	-	-	-	-	-	-	-

# Heart Rate Variability

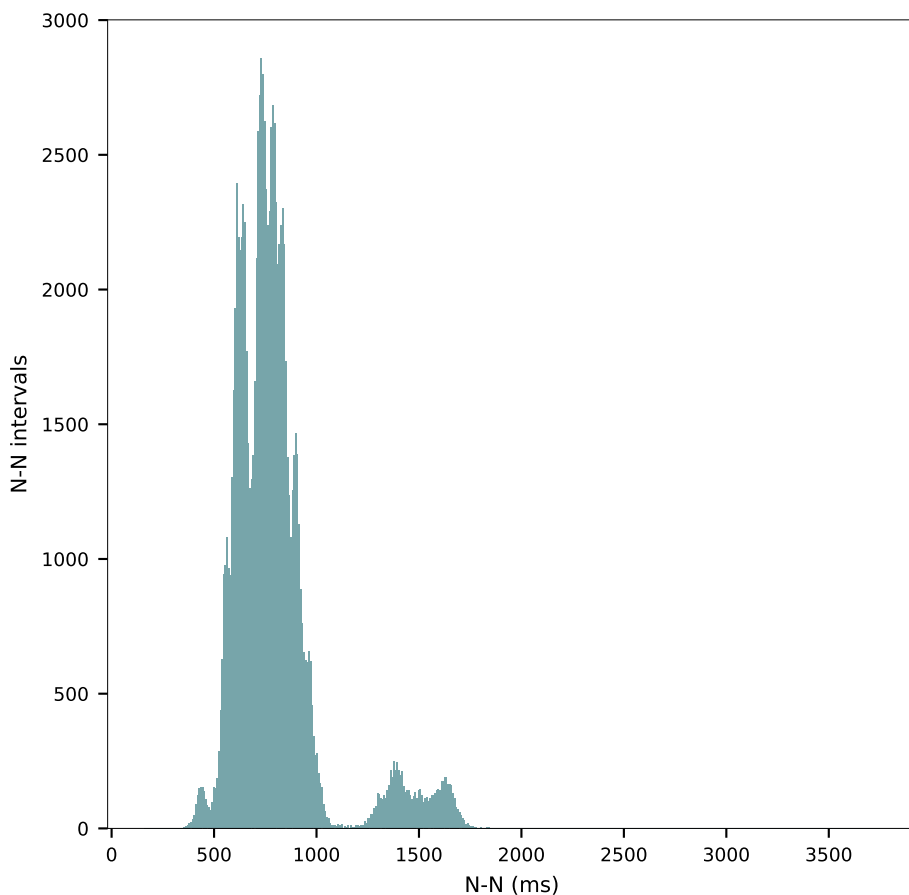
### Poincaré plot



### HRV parameters

AVNN	800.57 ms
SDNN	231.45 ms
pNN20	34.89%
pNN50	25.07%
rMSSD	260.17 ms
SDANN	158.59 ms
SDNN index	152.02 ms
Triangular index	37.23

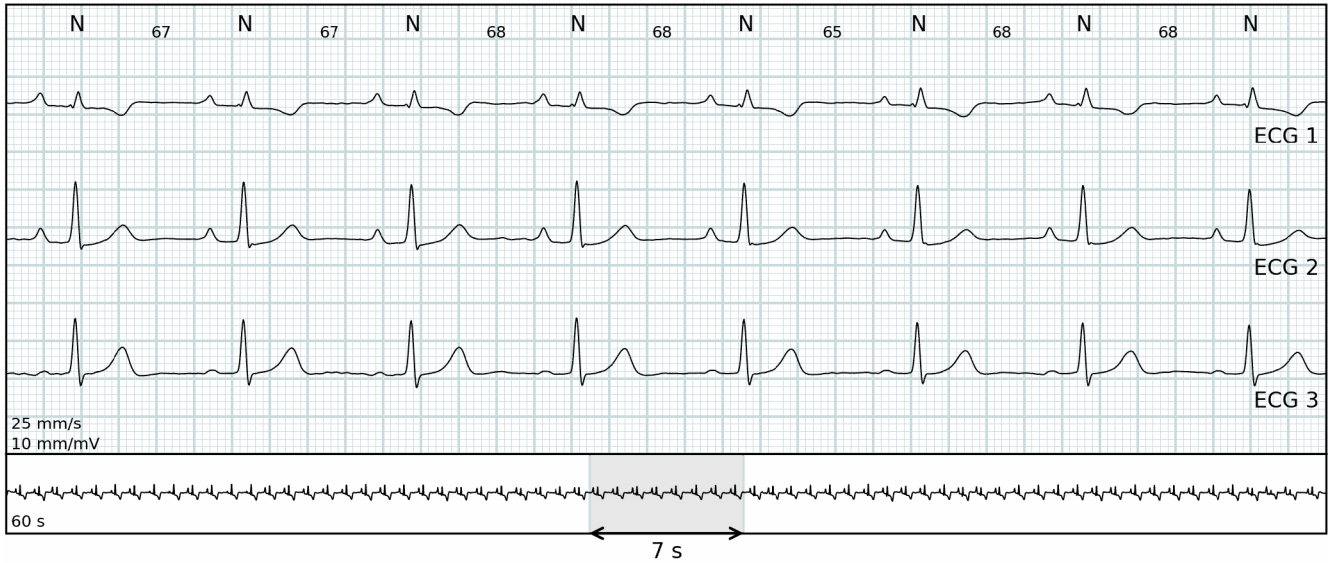
### N-N interval histogram



## Normal sinus rhythm

14:55:33 (Day 1)

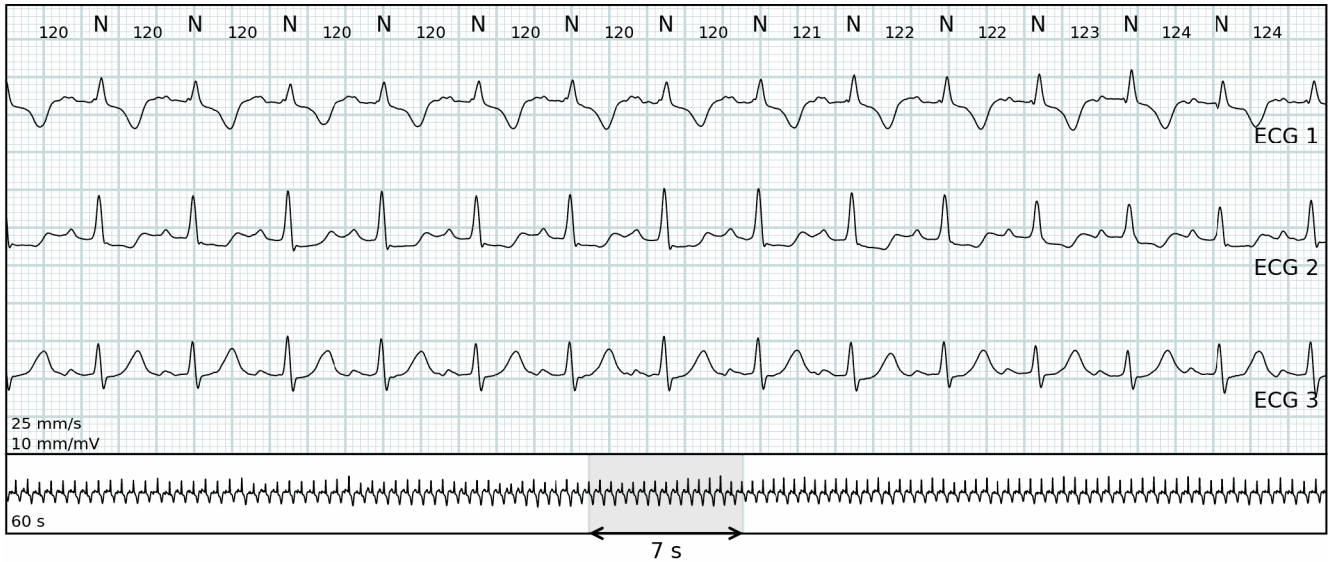
HR: 68 bpm



## Fastest heart rate

09:54:52 (Day 2)

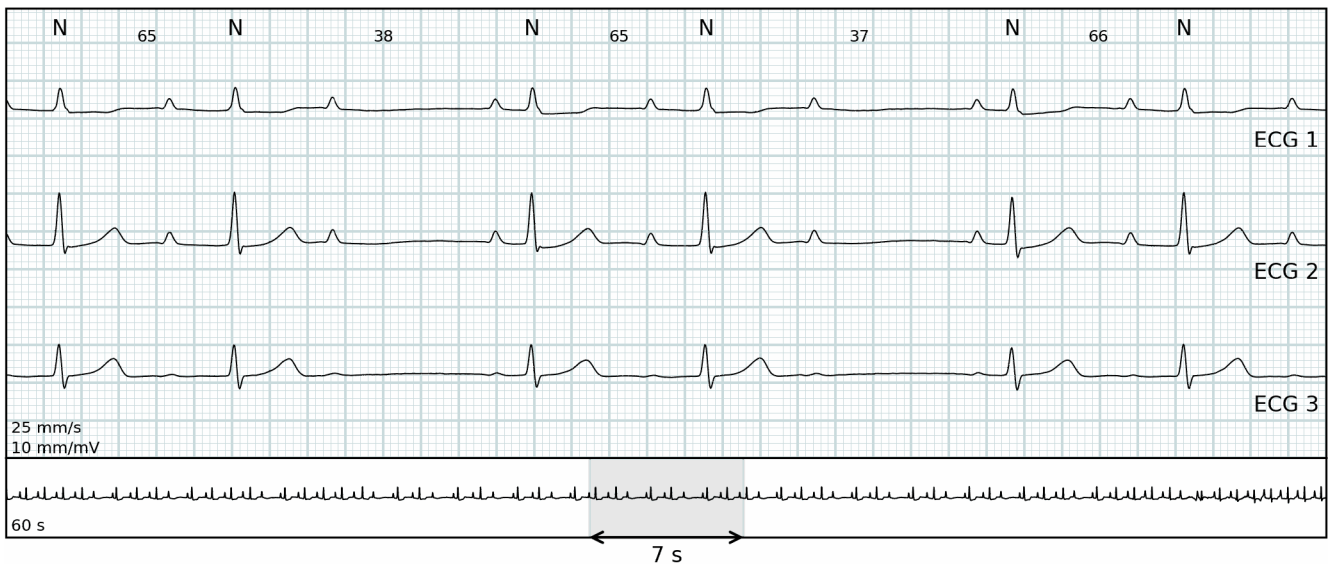
HR: 121 bpm



## Slowest heart rate

04:37:48 (Day 2)

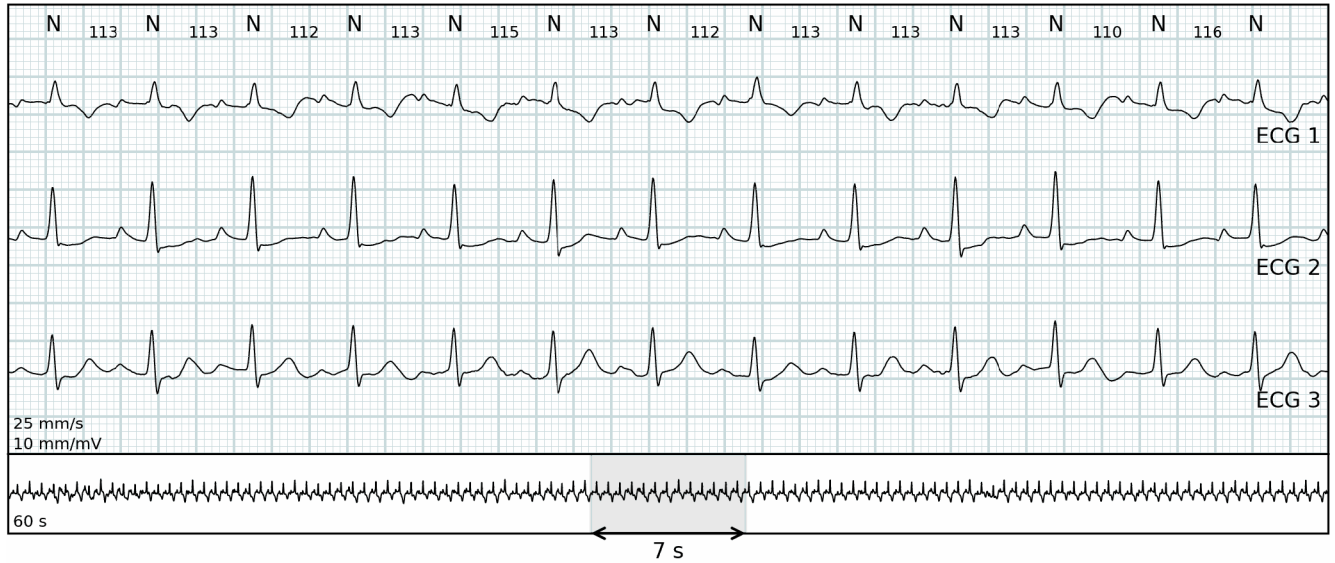
HR: 54 bpm



# Sinus tachycardia

12:12:23 (Day 1)

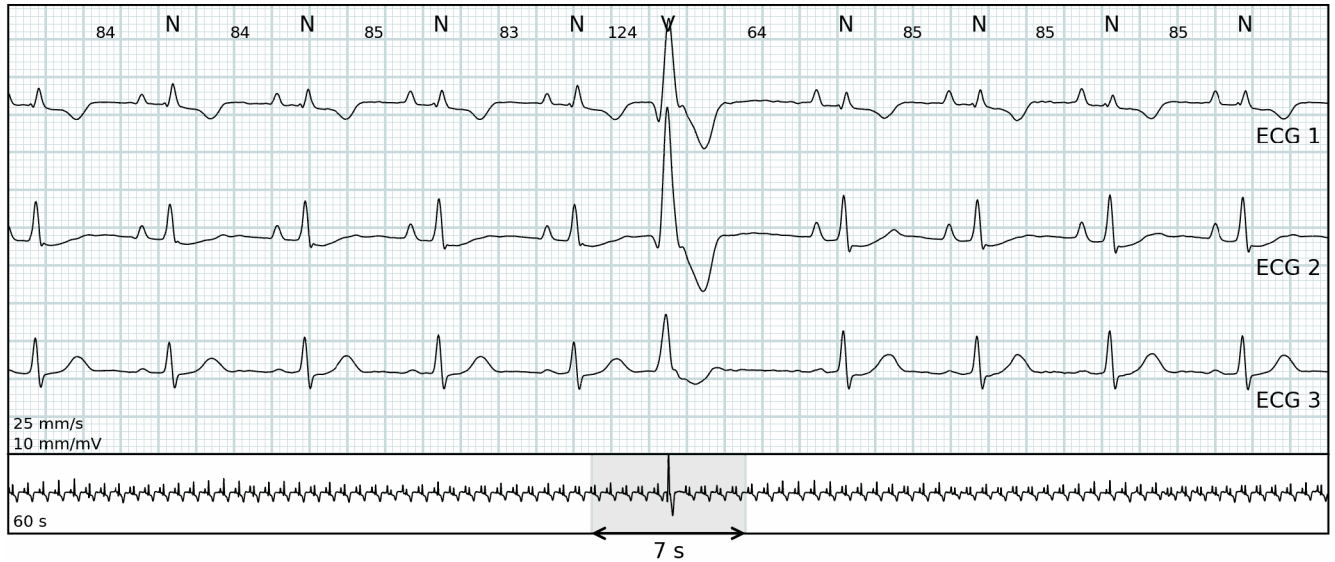
HR: 114 bpm



## Ventricular

17:59:08 (Day 1)

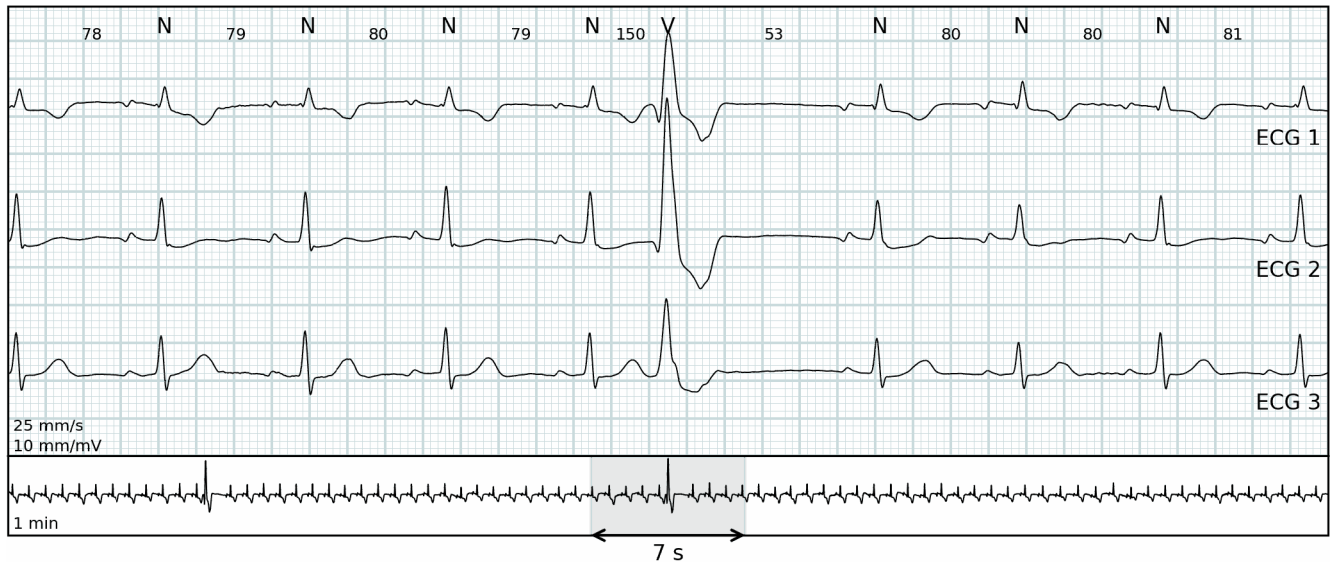
HR: 84 bpm



## Ventricular

18:41:32 (Day 1)

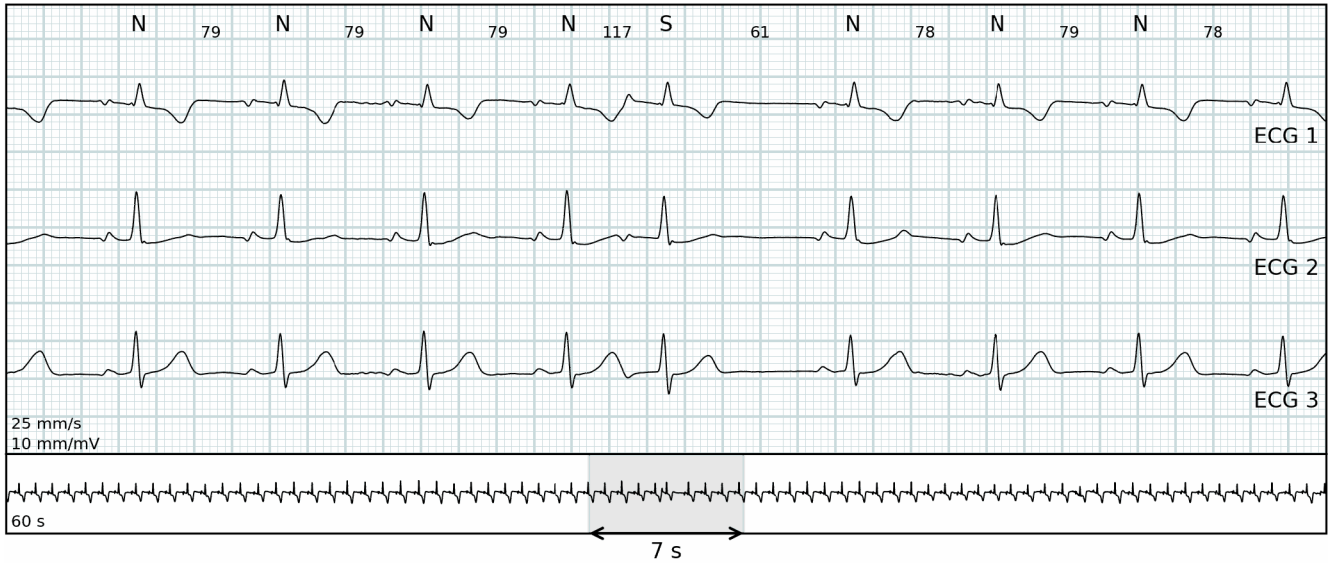
HR: 80 bpm



## Supraventricular

11:10:53 (Day 2)

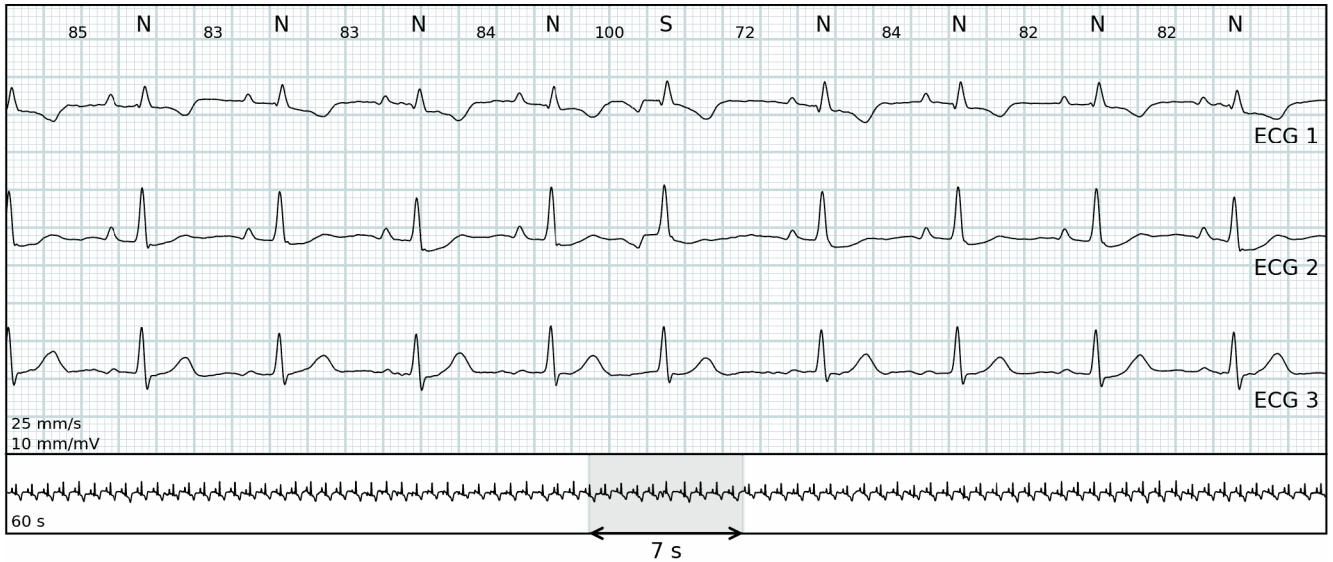
HR: 77 bpm



## Supraventricular

18:49:37 (Day 1)

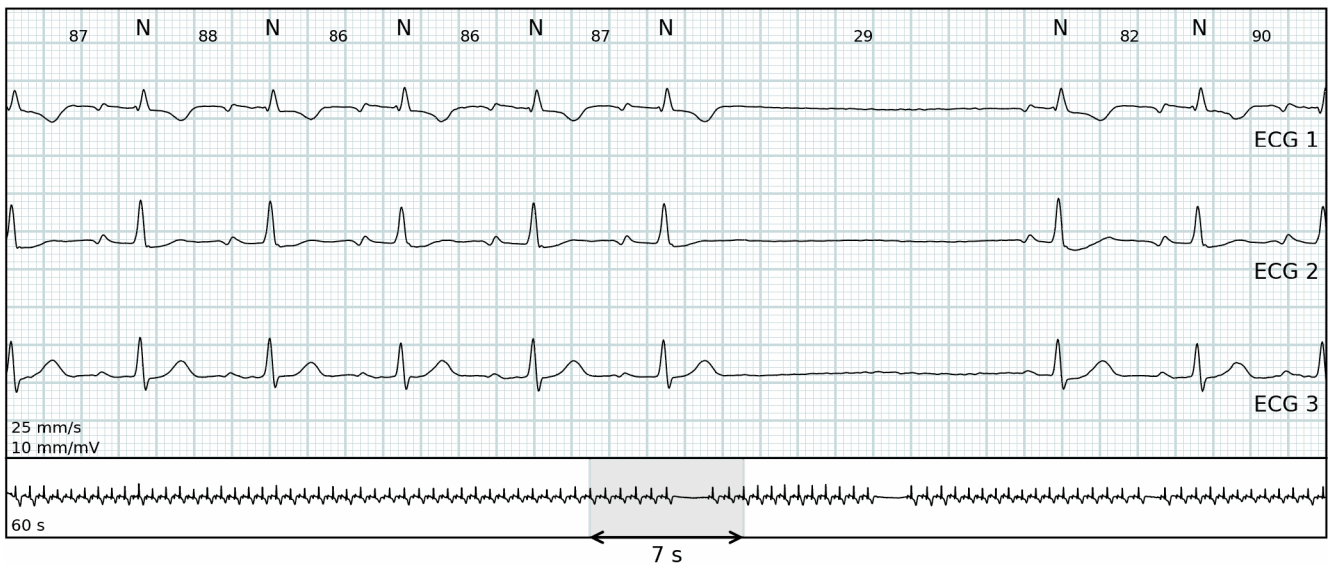
HR: 81 bpm



## Pause

19:22:34 (Day 1) Duration 2.09 seconds

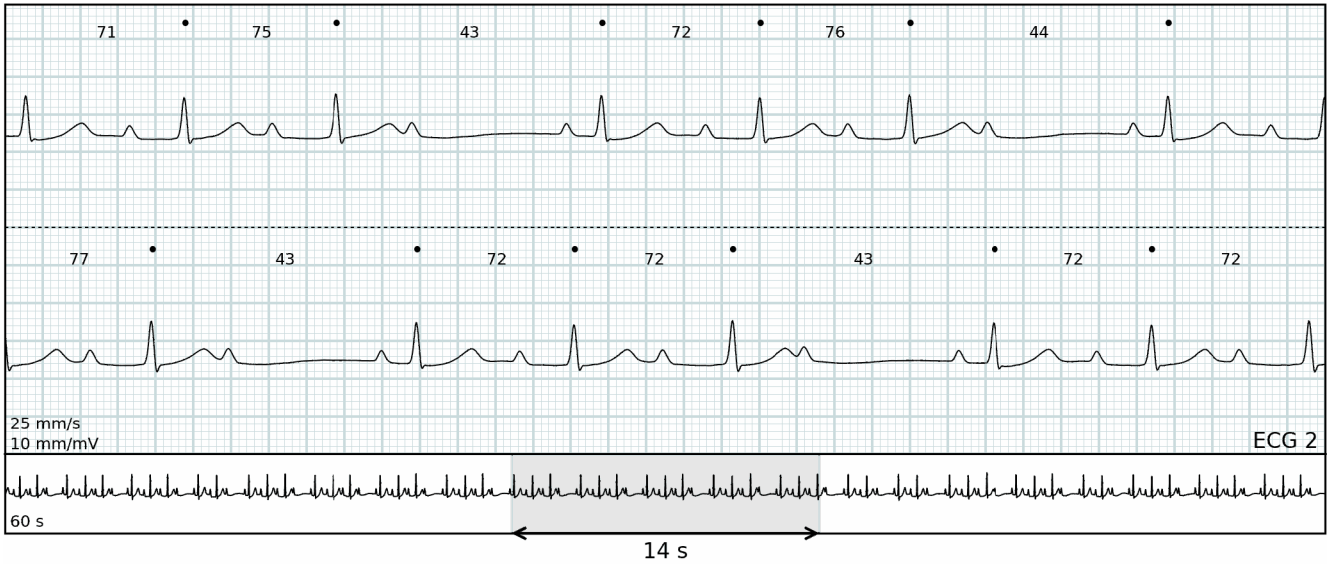
HR: 92 bpm



### AV-block: Second Degree (Type I)

00:10:49 (Day 2)

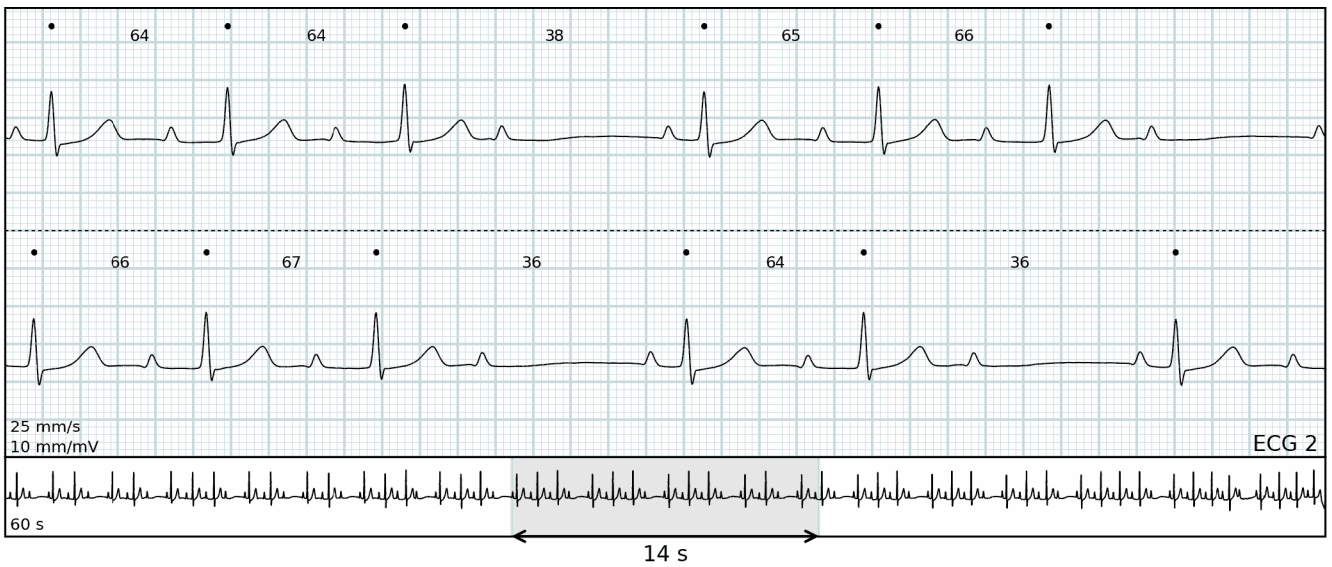
HR: 65 bpm



### AV-block: Second Degree (Type I)

04:40:24 (Day 2)

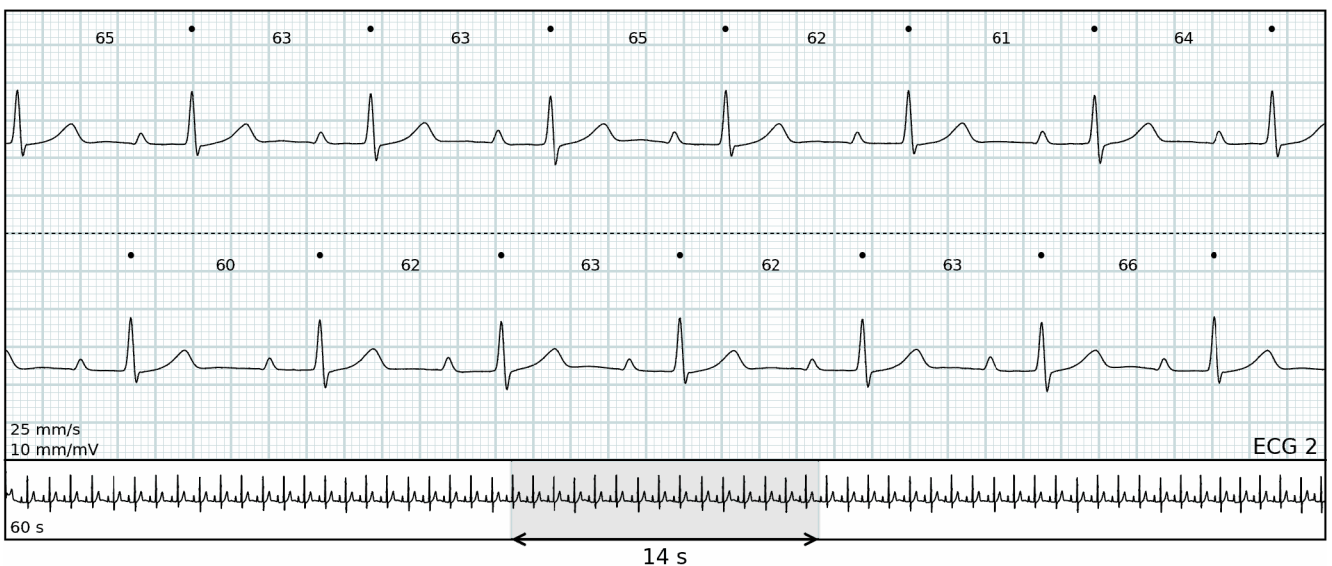
HR: 58 bpm



### AV-block: First Degree

06:09:27 (Day 2)

HR: 63 bpm





## Algorithm settings

<b>Minimal pause duration</b>	2 seconds
<b>All heart rate values</b>	Calculated per 30 seconds
<b>Sinus Tachycardia</b>	Sinus rhythm faster than 100 bpm lasting longer than 30 seconds
<b>Sinus Bradycardia</b>	Sinus rhythm slower than 55 bpm lasting longer than 30 seconds
<b>Ventricular Tachycardia</b>	8 or more consecutive ventricular beats at a rate greater than 100 bpm
<b>Ventricular Bradycardia</b>	3 or more consecutive ventricular beats at a rate lower than 55 bpm
<b>Ventricular Runs</b>	3 to 7 consecutive ventricular beats at a rate of greater than 100 bpm
<b>Supraventricular Tachycardia</b>	8 or more consecutive supraventricular beats at a rate greater than 100 bpm
<b>Supraventricular Runs</b>	3 to 7 consecutive supraventricular beats at a rate of greater than 100 bpm
<b>Afib/Aflut</b>	Atrial fibrillation or flutter lasting longer than 30 seconds
<b>Noise</b>	Motion artifacts or poor connection
<b>Non-diagnostic</b>	The combined amount of Lead OFF and noise
<b>•</b>	Undefined annotation
<b>☾</b>	Example is during night (22:00 - 07:00)
<b>Version</b>	JR 1.29.0 / AE 1.29.0 / RG 1.29.0

Algorithms provided by Cardiolund

## Abbreviations

<b>N</b>	Normal
<b>V</b>	Ventricular
<b>S</b>	Supraventricular
<b>NSR</b>	Normal Sinus Rhythm
<b>VR</b>	Ventricular Rhythm
<b>SVR</b>	Supraventricular Rhythm
<b>AFIB/AFL</b>	Atrial Fibrillation/Atrial Flutter